

Type 66SS

316L Stainless Steel Pressure Filter/Regulator

BELLOFRAM PRECISION CONTROLS



The **Type 66SS Stainless Steel Pressure Filter/Regulator** is a direct-acting diaphragm pressure-reducing regulator. This ruggedly built regulator operates in pressure ranges up to 250 psig (17 BAR) with maximum inlet pressure up to 435 psig with a manual drain / 150 psig with an auto drain. The unit is supplied standard with a 25-micron stainless filter. The Type 66SS pressure filter/regulator can be through-panel mounted with the mounting nut supplied or pipe mounted by its ports. The Type 66SS applications include air pressure and industrial or medical gas pressure filtering and regulation. Ideal for when a corrosion-resistant regulator is preferred or required. All material internal as well as the body and bonnet is made from bar stock - 316L stainless steel. Oxygen cleaning is available on the T66SS unit for use in clean environments, gases and medical applications.

FEATURES

- All SS316L stainless steel material
- Four port sizes of 1/4" to 3/4" NPT
- 25µ stainless steel filter standard
- High flow rate 1.3, 1/4" to 6.4, 3/4" CV
- Five pressure ranges between 3 & 250 psig
- Low temp nitrile elastomers -76°F/+176°F

FOCUS MARKETS/APPLICATIONS

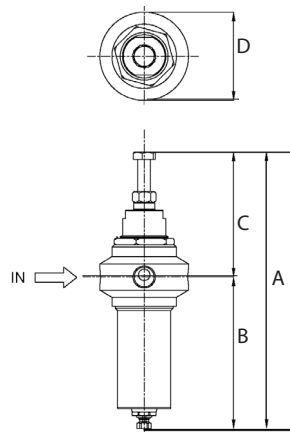
- Medical and bio-medical
- Instrument & sampling panels
- Corrosive and caustic mediums
- Industrial & specialty gas handling
- Pharmaceutical processing equipment
- Food & beverage facilities and equipment

COMPETITIVE ADVANTAGES

- 316L NACE compliant
- -76°F to 176°F temp range
- 316L Bar stock precision parts
- High flow rate in all port sizes
- O2 cleaning available

DIMENSIONS

Size		A	B	C	D
1/4", 3/8"	in.	10.6	6.0	4.6	2.5
	mm.	270.7	153.7	117.0	64.0
1/2", 3/4"	in.	10.9	6.1	4.8	3.2
	mm.	279.0	156.0	123.0	82.0



BELLOFRAM®

Precision Controls

TECHNICAL DATA

Fluid	Compressed air & Industrial gases
Pipe size	1/4", 3/8", 1/2", 3/4"
Port thread	NPT - Standard
Max. inlet pressure	With metal bowl (manual drain) - 435 psig (30 bar) With metal bowl (Automatic drain) - 150 psig (10.5 bar)
Max. operating temp. range (ambient)	-60°C to +80°C (-76°F to +176°F)
Particle removal	25 micron - Standard 5, 40 micron - Optional
Filter element material	SS316L
Materials of construction	Stainless steel as per AISI 316L
Body, Bowl	SS316L with NACE compliance (MR 0175)
Internal Parts	SS316L
External parts (Body, Bonnet, Bowl)	SS316L with NACE compliance (MR 0175)
Diaphragm assembly	Synthetic rubber with PTFE protection
Elastomers	Low Temp. Nitrile: -60°C to +80°C (-76°F to +176°F) - Standard Fluorocarbon (Viton-FKM): -20°C to +180°C (-4°F to + 356°F)
Standard Nominal Flow Rate at 150 psi (10 bar) inlet pressure, a set pressure of 87 psi (6 bar) and flow open until output drops 14.5 psi (1 bar) from set point.	1/4" - 74 scfm / 2,095.4 lpm 3/8" - 173 scfm / 4,898 lpm 1/2" - 192 scfm / 5,436.8 lpm 3/4" - 340 scfm / 9,627.7 lpm
CV value	1/4" - (1.39) 3/8" - (3.26) 1/2" - (3.62) 3/4" - (6.42)
Bowl capacity	160 mL
Drain	Manual - Standard Automatic - Optional
Type	Relieving - Standard Non-relieving - Optional
Pressure adjustment	Hex headed adjusting screw - Standard "T" handle - Optional
Regulated sec. pressure ranges	3.0 - 30 psi (0.21 - 2.10 bar) 6.0 - 60 psi (0.4 - 4.14 bar) 12.5 - 125 psi (0.86 - 8.6 bar) 15.0 - 150 psi (1.0 - 10.0 bar) 25.0 - 250 psi (1.7 - 17.5 bar)
Gauge port (2 nos.)	1/4" NPT
Mounting	Panel mount nut - Standard
Weight	1/4", 3/8" - 4.4 lbs. (2 Kgs.) 1/2", 3/4" - 6.6 lbs. (3 Kgs.)

Bellofram Precision Controls, a division of the Marsh Bellofram Group of Companies

REV 10.11.24

Type 66SS

316L Stainless Steel Pressure Filter/Regulator

BELLOFRAM PRECISION CONTROLS

ORDERING INFORMATION

	66SS	X	XXX	XX	X	X	X	0	X	X
PORT SIZE (NPT)										
1/4"		2								
3/8"		3								
1/2"		4								
3/4"		6								
SPRING RANGE (PSIG / BAR)										
3-30 / 0.2-2.1			030							
6-60 / 0.4-4.0			060							
12-125 / 0.86-8.6			125							
15-150 / 1-10			150							
25-250 / 1.7-17.5			250*							
FILTER ELEMENT										
5 micron				05						
25 micron - Standard				25						
40 micron				40						
O-RINGS										
Low temp Nitrile					1					
FKM					2					
VERSIONS										
Relieving - Standard						R				
Non-relieving						N				
DRAIN										
Manual							M			
Automatic (*Nitrile only)							A			
ADJUSTMENT										
Hex head - Standard									1	
T Handle									2	
APPROVALS										
RoHS, Reach										0

* Hex head only



Bellofram Precision Controls, a division of the
Marsh Bellofram Group of Companies

REV 10.11.24