

Type 64SS

316L Stainless Steel Particulate Filter

BELLOFRAM PRECISION CONTROLS



The **Type 64SS Stainless Steel Particulate Filter** is a highly reliable filter that complies with NACE MR 0175 standards for sulfide stress cracking resistance, making it ideal for oil field equipment. It features a secure thread element connection, ensuring a tight seal without the need for special lubricants. The filter housing and element are polished and degreased, and the threaded design eliminates the need for extra parts during installation or maintenance, preventing loss of seals or rings. The Type 64SS is suitable for air pressure and industrial or medical gas pressure filtering and regulation, especially when a corrosion-resistant regulator is needed. Constructed from 316L stainless steel bar stock, the body and bonnet ensure durability. Oxygen cleaning is available for the T64SS unit, making it suitable for clean environments, gases, and medical applications.

FEATURES

- All SS316L stainless steel material
- Seven port sizes of 1/4" to 2" NPTF
- 25µ stainless steel filter standard
- High flow rate: For 1/4" CV is 1.44 & 3/4" CV is 3.62
- Low temp nitrile elastomers -76°F/+176°F

FOCUS MARKETS/APPLICATIONS

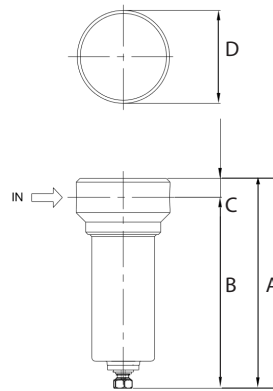
- Medical and bio-medical
- Instrument & sampling panels
- Corrosive and caustic mediums
- Industrial & specialty gas handling
- Pharmaceutical processing equipment
- Food & beverage facilities and equipment

COMPETITIVE ADVANTAGES

- Body & Bowl are NACE compliant
- -76°F to 176°F temp range
- 316L bar stock precision parts
- High flow rate in all port sizes
- O2 cleaning available

DIMENSIONS

Size		A	B	C	D
1/4", 3/8"	in.	6.7	5.9	0.7	2.5
	mm.	170.2	151.5	17.1	64.0
1/2", 3/4"	in.	6.7	6.1	0.6	3.2
	mm.	170.2	155.0	16.5	82.0
1", 1 1/2", 2"	in.	7.5	6.3	1.2	4.7
	mm.	190.0	160.0	30.0	120.0



BELLOFRAM®

Precision Controls

TECHNICAL DATA

Fluid	Compressed air & Industrial gases
Pipe size	1/4", 3/8" 1/2", 3/4", 1", 1 1/2", 2"
Port thread	NPT - Standard
Max. inlet pressure	With metal bowl (manual drain) - 435 psig (30 bar) With metal bowl (Automatic drain) - 150 psig (10.5 bar)
Max. operating temp. range (ambient)	-60°C to +80°C (-76°F to +176°F)
Filter element size	25 micron - Standard 5, 40 micron - Optional
Filter element material	SS316L
Materials of construction	Stainless steel as per AISI 316L
Body, Bowl	SS316L with NACE compliance (MR 0175)
Internal parts	SS316L
External parts	SS316L with NACE compliance (MR 0175)
Elastomers	Low Temp. Nitrile: -60°C to +80°C (-76°F to +176°F) - Standard Fluorocarbon (Viton-FKM): -20°C to +180°C (-4°F to +356°F)
Standard Nominal Flow Rate at 150 psi (10 bar) inlet pressure, a set pressure of 87 psi (6 bar) and flow open until output drops 14.5 psi (1 bar) from set point.	1/4" - 76 scfm / 2,152 lpm 3/8" - 84 scfm / 2,378.6 lpm 1/2" - 123 scfm / 3,482.9 lpm 3/4" - 192 scfm / 5,436.8 lpm 1" - 500 scfm / 14,158.4 lpm 1 1/2" - 525 scfm / 14,866.3 lpm 2" - 550 scfm / 15,574.3 lpm
CV value	1/4" - (1.44) 3/8" - (1.59) 1/2" - (2.31) 3/4" - (3.62) 1" - (9.40) 1 1/2" - (9.90) 2" - (10.40)
Bowl capacity	1/4", 3/8", 1/2", 3/4" - 160 mL 1", 1 1/2", 2" - 425 mL
Drain	Manual - Standard Automatic - Optional
Weight	1/4", 3/8" - 3.3 lbs. (1.50 Kgs.) 1/2", 3/4" - 4.2 lbs. (1.90 Kgs.) 1", 1 1/2", 2" - 14.33 lbs. (6.5 Kgs.)

Bellofram Precision Controls, a division of the Marsh Bellofram Group of Companies

REV 10.11.24

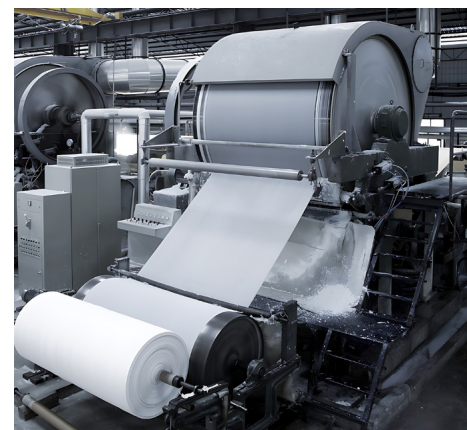
Type 64SS

316L Stainless Steel Particulate Filter

BELLOFRAM PRECISION CONTROLS

ORDERING INFORMATION

	64SS	XX	X	X	0	X	X
PORT SIZE (NPT)							
1/4"		02					
3/8"		03					
1/2"		04					
3/4"		06					
1"		08					
1 1/2"		14					
2"		16					
FILTER ELEMENT							
5 micron			005				
25 micron - Standard			025				
40 micron			040				
O-RINGS							
Low temp Nitrile				1			
FKM				2			
DRAIN							
Manual						M	
Automatic (*Nitrile only)						A	
APPROVALS							
RoHS, Reach							0



Bellofram Precision Controls, a division of the Marsh
Bellofram Group of Companies

REV 10.11.24